



2005-21

JACKSON BUREAU OF FIRE SAFETY
FIRE DISTRICT No. 1 & 3
200 Kierych Memorial Drive
Jackson, NJ 08527



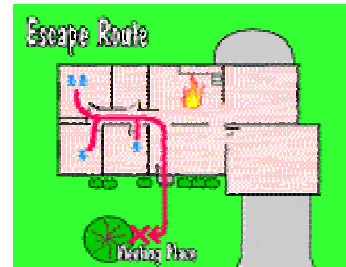
WWW.JACKSONFIREDIST3.ORG

HOME ESCAPE PLAN

More than 4,000 people die each year in home fires. More than 90% of residential fire deaths and injuries result from fires in one and two family houses and apartments. It is essential that every household have a plan for escaping a fire and practice it by holding fire drills twice a year. The more you practice your escape plan, the more likely you and your family will make it out alive.

THINGS TO DO AND REMEMBER

Draw a map of your home. Be thorough, include all windows, doors, outdoor features and possible obstacles in your drawing. Mark the location of all your smoke detectors too. Revise your escape plan as circumstances change in your household. Make sure everyone including young children, older adults and people with disabilities are included.



Know two ways out of each room. Make sure that you know more than one way out of each room, the first way may be blocked by fire. Know where all your doors and windows are located. Be certain that your windows are not painted shut and can be opened from the inside. Do a walk through of the primary and alternative escape routes. Make sure that all exits are accessible to all members of the household.

Decide on a meeting place. Once you are out of your house, stay out. Have a predetermined meeting place where you can all meet. Your meeting place should be a permanent fixture, such as a tree, mailbox or a neighbors porch. If there is a member of the family missing, do not go back in, report it to the fire department. Those are the people who have the proper equipment to go inside burning buildings.

Know the number for an emergency. 911 is the number to call for any emergency situation.

- * Identify your home by displaying your house number in large numbers of contrasting colors.
- * Check the batteries in your smoke detectors monthly.
- * Change the batteries in your smoke detectors twice a year.
- * If you encounter smoke, crawl low where the air is safer to breath.
- * Test doors with the back of your hand. If a door is hot, get out another way.

